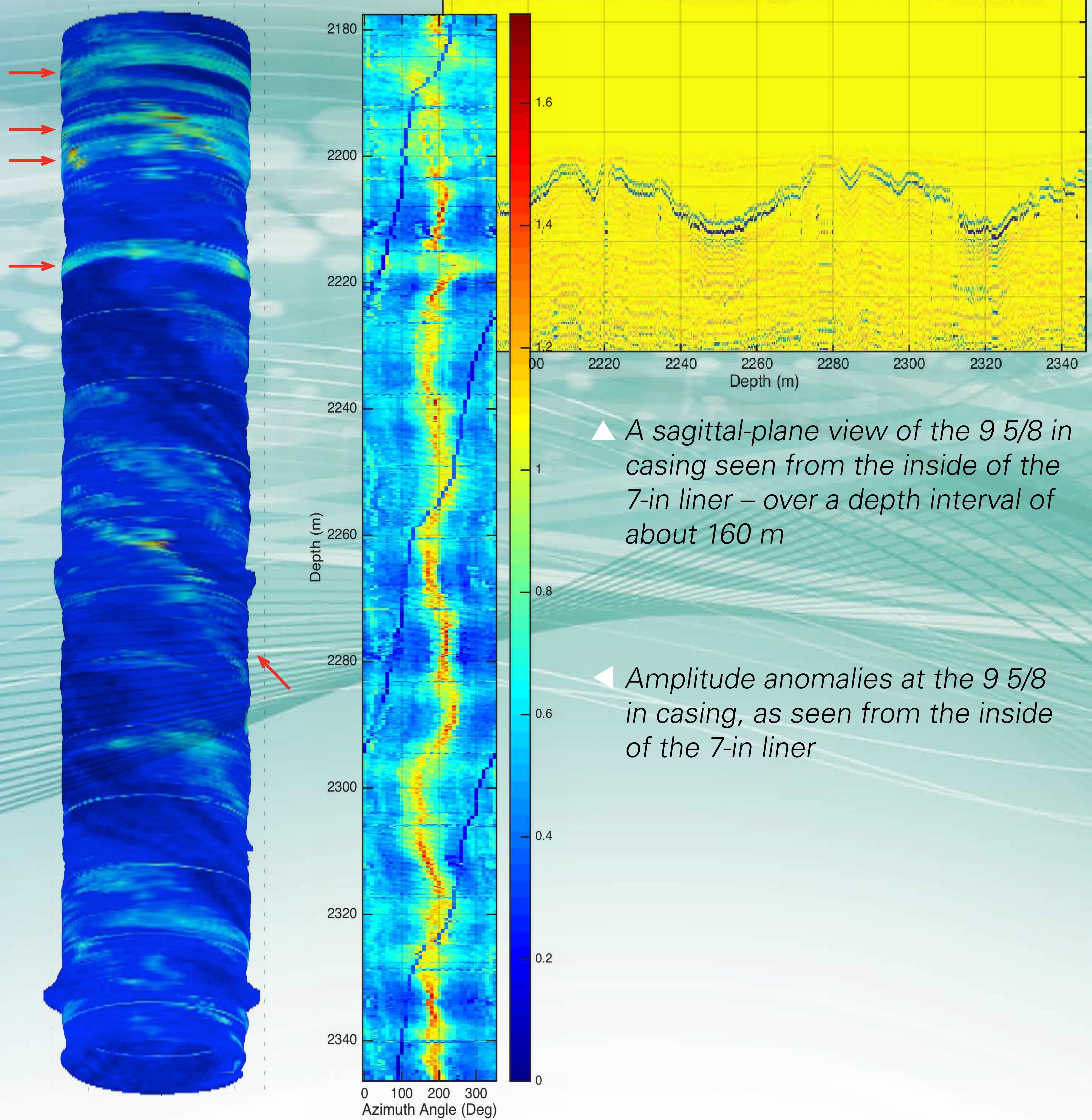


SprintAVEC™

We're putting innovation first. In preparation for the Plug & Abandonment of a depleted well, the integrity of the cement behind multiple layers of casing can now be evaluated using the READ data analysis tool SprintAVEC™ ("AVEC" for Acoustic Verification and Evaluation of Cement) – *only available at READ.*

- + **Acoustic characterization of a well**
- + **This is a software package for analysing acoustic data acquired by third-party hardware**
- + **Combines analyses of Sonic and Ultra Sonic data**

Red arrows point to weaknesses in cement outside a 9 5/8 in casing from data acquired inside a 7-in liner



▲ A sagittal-plane view of the 9 5/8 in casing seen from the inside of the 7-in liner – over a depth interval of about 160 m

◀ Amplitude anomalies at the 9 5/8 in casing, as seen from the inside of the 7-in liner

For more information:

Email: info@readgroup.com

Online: readgroup.com



Your production is our future

