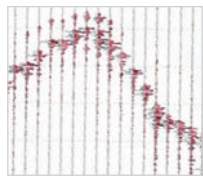
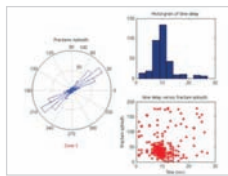


Imaging Hypocenters  
Zero uncertainty



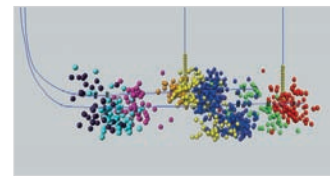
Downhole Sources and  
Selective Perforating  
Time zero for velocities



Unique S-wave Processing  
Independent measurement  
of fracture orientation



Analyze Core at  
Reservoir Pressure  
Find the sweet spot



Real-Time Frac Monitoring  
Optimize Production

## Shale Gas Secret #1:

# The Sweet Spot

Find it, stimulate it and monitor it with **READ & Tucker Energy Services**

Tucker Energy Services (TES), trusted in wireline logging for 80 years, is teaming with READ ASA, the innovators of borehole seismic technology for over 25 years, to help shale gas operators maximize shale gas production. By utilizing the latest evaluation and microseismic monitoring tools, targeting specific perforation points or "sweet spots", and monitoring with real-time hydraulic fracturing mapping, READ and TES are eliminating uncertainty with state-of-the-art imaging solutions.

- + Real-Time Hydraulic Fracture Mapping
- + Verify with READ's new RTM Location Algorithm
- + Independent Verification of Frac Azimuth with Unique Shear Wave Analysis
- + Find Perf "Sweet Spots" with Tucker's Unique Pressurized Coring Tool
- + Use Safest Type of Perf System – recording true time zero for velocity calculations

For more information:

Email: [shalesecrets@tuckerenergy.com](mailto:shalesecrets@tuckerenergy.com)

Online: [tuckerenergy.com](http://tuckerenergy.com) | [readgroup.com](http://readgroup.com)



**Your production** is our future

